

---

## MASTER PLAN STUDY OF MOUNT SANGGABUANA AREA

Ina Revayanti

Universitas Winaya Mukti, Indonesia  
Email: inarevayanti74@gmail.com

---

**Abstract:** *The development of ecotourism in Indonesia has good prospects because it is supported by the potential of biodiversity including cultural diversity, which is the basic capital for the development of ecotourism. Ecotourism is a tourism sector that has the potential as one of the supports for the national economy, from ecotourism can also be utilized by local governments to increase their own local revenue, with the existence of this sector in addition to being able to absorb workers can also be a good source of foreign exchange earnings, and also able to encourage development in investment. In developing ecotourism optimally in the region, it is very necessary to plan, utilize, control, strengthen institutions and empower communities by taking into account economic, social, ecological principles and involving stakeholders in terms of managing ecotourism potential. The Sanggabuana Mountain Area Master Plan is a form of effort to preserve and protect the biodiversity of the Sanggabuana Mountains and efforts to change the status of the Sanggabuana Mountains area to a National Park which is expected to maintain the biodiversity in the Sanggabuana mountains and get proper protection and preservation efforts.*

**Keywords:** *masterplan, Sanggabuana Mountain, ecotourism, national park*

---

### INTRODUCTION

Mount Sanggabuana is a mountain located in Karawang Regency. Administratively, this mountain is located in Mekarbuana Village, Tegalwaru, Karawang, Karawang Regency with an altitude of 1,291 meters above sea level. Mount Sanggabuana is a symbol of the green Karawang in the midst of the growing development of Karawang, from the top of the mountain tourists can see the scenery of Karawang City to the Jatiluhur dam located in Purwakarta Regency. Mount Sangga Buana is located on the border of four districts, namely; in the North is Karawang Regency, East is Purwakarta Regency, South is Cianjur Regency and West is Bogor Regency. Currently, the status of the Sanggabuana mountain forest area is included in the category of production forest and is still proposed to be a protected forest to prevent widespread forest destruction in the area, although until now the Sanggabuana mountain forest is still quite well maintained.

Mount Sanggabuana which is still beautiful has natural potential such as waterfall tourism, namely Curug Cigentis, Curug Lalay, Curug Santri and many flora and fauna that are still awake, such as Lutung Java, Surili Jawa and Owa Jawa. On Mount Sanggabuana there are also religious tourism and springs. Many tourists make a pilgrimage on Mount Sanggabuana. Tourists usually take six to eight hours to reach the top of Mount Sanggabuana. Currently, there are many supporting facilities around Mount Sanggabuana, such as water booms and restaurants. The uniqueness of the landscape, the uniqueness of nature, as well as the wealth of biodiversity in the Sanggabuana Mountains, there have been no efforts to preserve and protect the biodiversity of the Sanggabuana Mountains.

The identification of potentials and problems in this study is the need for mapping tourism potential in the Mount Sanggabuana Area and the need to identify problems that exist in the Mount Sanggabuana Area, including related to accessibility. Then, the purpose of this research preparation activity is to make guidelines for the development of the Sanggabuana Mountain Area based on the potential and problems that exist around the Sanggabuana Mountain Area, provide an overview of the design of the development of the Sanggabuana Mountain Area as a conservation area to preserve its nature, and provide data that can be used as one of the sources for the Plan to Change the Function of Mount Sanggabuana Area into a National Park.

## METHODS

SWOT analysis is a very effective way to identify internal factors that are strengths and weaknesses as well as opportunities and challenges faced by an area (Mondal & Haque, 2017; Singh, 2010). Analysis using the SWOT framework will be the basis for formulating policies and strategies based on the strengths, weaknesses, opportunities, and challenges of superior regions or tourist areas (Lak et al., 2020; Wiwoho et al., 2019; Zhu et al., 2023). The results of this SWOT analysis are also input in determining the position of the tourism sector in Karawang Regency.

Data sources in this study are primary data and skunder data. Primary data includes direct observations at the study location of Karawang Regency tourism products and markets, especially tourism in Mekarbuana Village and interviews with predetermined respondents. While Secondary Data is obtained from the results of studies that have been carried out related to research such as books, articles, village potential data and other documentation. Meanwhile, the analysis in this study was carried out by two methods, namely qualitative analysis to treat qualitative data, and quantitative analysis to treat quantitative data which were both obtained from both primary and secondary surveys.

Method used in analyzing qualitative data was qualitative descriptive analysis to describe regional and tourism conditions based on the results of primary surveys and secondary data obtained. As well as qualitative analysis methods, the analytical methods used in analyzing quantitative data obtained from the distribution of questionnaires in tourist attractions are descriptive analysis with one-way tabulation (frequency table) and cross tabulation (Cross tabulation analysis).

Both analysis methods are used in analyzing the supply and demand for tourism in Karawang Regency, especially in Mekarbuana Village, Tegalwaru District. Stock analysis is carried out to identify the characteristics, potentials, and problems of superior tourism products which include tourist attraction, tourism supporting facilities, and accessibility. Demand analysis was conducted to identify the characteristics, preferences, and market potential of tourists in Karawang Regency in general.

## RESULTS AND DISCUSSION

Sanggabuana Mountains which has a landscape of approximately 23 kilometers with an area of approximately 43,000 hectares located in Karawang Regency, Purwakarta Regency, Bogor Regency, and Cianjur Regency in West Java. The Mount Sanggabuana area is located in Karawang Regency with an area of 20,464.49 Ha, which is dominated by dryland agriculture of 3,569.82 Ha, industrial estate development reserves (limited production forest) of 3,063.16 Ha and Protection Forest of 3,032.02 Ha.

**Table 11.** Spatial Pattern of Mount Sanggabuana Area

No.	District	Information	Space (Ha)
1	Pangkalan	Industrial Estate Development Reserve	3.063,16
		Protected Forest	2.409,25
		Production forest	306,27
		Industrial Estate	60,12
		Urban Settlements	1.346,48
		Dryland Crop Farming	1.105,06
		Industrial Zone	1.408,58
2	Tegalwaru	Industrial Estate Development Reserve	1.403,62
		Protected Forest	3.032,02
		Production forest	2.419,63
		Urban Settlements	131,08

Dryland Crop Farming	3.569,82
Sub-district City Area	209,40
<b>Total</b>	<b>20.464,49</b>

Source: Analysis Results, 2022

The delineation of the Mount Sanggabuana Area in the Master Plan study of the Mount Sanggabuana Area, Karawang Regency is at an altitude above 150 masl, covering 10 (ten) villages, namely 1 (one) village in the Pangkalan District area and 9 (nine) villages in the Tegalwaru District area with a total coverage area of 5,580.14 Ha. The largest area of the Sanggabuana Mountain Area Masterplan study is in Mekarbuana Village with an area of 1,822.08 Ha and the smallest area is in Kutalanggeng Village with an area of 44.04 Ha.

**Table 22.** Delineation of Mount Sanggabuana Area

No.	District	Village	Space (Ha)
1	Pangkalan	Medalsari	353,21
2	Tegalwaru	Cigunungsari	657,18
		Cintalaksana	786,37
		Cintalanggeng	74,05
		Cintawargi	411,53
		Cipurwasari	220,70
		Kutalanggeng	44,04
		Kutamaneuh	509,80
		Mekarbuana	1.822,08
		Wargasetra	701,18
<b>Total</b>			<b>5.580,14</b>

Source: Analysis Results, 2022

**Analisis Strength, Weakness, Opportunity, dan Threat (SWOT)**

SWOT analysis has two main factors that must be considered, namely internal factors and external factors. Internal factors are factors related to the elements possessed by an organization. In this case, it is related to factors from within the development of tourism in the Sanggabuana Mountain Area, Karawang Regency. The elements owned will be analyzed for strength and weakness. External factors are those that a tourism organization does not have, which are outside its environment. Analysis of external factors can also be done based on benchmarks derived from the mission carried out by tourism. Opportunities and threats are the output of external factor analysis. The results of this analysis are able to provide an indication of optimal benefits measured from the objectives to be achieved, which is the purpose of this SWOT analysis.

**Table 33.** SWOT Analysis

	<u>Opportunities</u>	<u>Threats</u>
<b>External</b>	1) Tourism business investment still has opportunities in various fields;	1) Competition with other areas with the same potential Tourist Area Destination
<b>Internal</b>	2) Tourism can be associated with the	Objects (ODTW);

	development of Karawang Regency as an Industrial Estate; 3) Employment in various fields; 4) Opportunities for SMEs and people's economies in tourism; and 5) Has the most tourist visits in West Java Province	and 2) Some objects are not yet well known as tourist destinations
--	--	---

<b><u>Strengths</u></b>	<b><u>S-O scenarios</u></b>	<b><u>S-T scenario</u></b>
1) Cultural Heritage Attractions; 2) Attractions of Historical and Religious Sites; 3) Mountain Natural Attractions; 4) Artificial attractions (tourist villages, play villages); 5) Kas Karawang Culinary Tourism Attractions; 6) Easy accessibility because it is crossed by the Jakarta - Cikampek - Cipularang and Cipali toll roads; 7) There is a train station which is the meeting of two main lines from Bandung and from Cirebon to Jakarta; and n 8) There is a strong commitment from the local government for tourism development.	1) Establish cooperation with national and foreign investors in tourism development; 2) Need for tourism development bylaws; 3) Cooperation with the area around Karawang Regency in the development of tour packages.	1) Utilize investors and travel agencies in promotions; 2) Increase the role and ability of local communities in managing the tourism environment; and 3) Developing nature and cultural conservation.

<b><u>Weaknesses</u></b>	<b><u>W-O scenarios</u></b>	<b><u>S-T scenario</u></b>
1) Some roads have been damaged and some traffic is still inadequate and connected, especially those leading to tourist attractions and attractions; 2) The tourist area of Mount Sanggabuana does not have a public transportation terminal; 3) The tourist area of Mount Sanggabuana does not have a large parking area, which is adequate as a parking lot for	1) Provide and improve infrastructure; 2) Improve existing public facilities; 3) Create institutions; 4) Developing tourism schools and training for ;d generation 5) Utilizing the main route of Jakarta Bandung Cirebon for access to domestic	1) Structuring and coordinating tourism institutions both community, business, and government; 2) Establish strategic plans in the field of tourism and implement; and

- |   |                                |  |
|---|--------------------------------|--|
| <ul style="list-style-type: none"> <li>4) Lack of accommodation to support tourism activities;</li> <li>5) The unavailability of complete tourist facilities in some tourist attractions;</li> <li>6) Tourism institutions have not been optimal;</li> <li>7) Tourism marketing that has not been optimal;</li> <li>8) Human resources are still limited in education and experience in tourism; and</li> <li>9) Public awareness of tourism is still low.</li> </ul> | tourists and foreign tourists. | 3) Making policies that support the development of tourism business is realized with a conducive tourism business climate. |
|---|--------------------------------|--|

*Source: Analysis Results, 2022*

The development of unique tourism potential, namely introducing existing biodiversity and natural beauty, recommending the management of existing natural potential with emphasis on conservation and community involvement. Some of the tourism potentials that can be developed in the Sanggabuana conservation area include the following.

**Table 44.** The Highest Number of Tourist Visits to Tourist Attractions in West Java Province, 2020

Special Interest Tourism	Agro Tourism	Cultural Tourism, Religious and Historical Tourism	Festival Sanggabuana
Birdwatching	Coffee	Earth Alms in Calincing Village and Tipar Village	Sanggabuana Annual Festival
Herping	<i>Terubuk</i>		Migratory Raptor Festival
Bushcraft Camp	Honey		
Rock Climbing	Palm sugar		
Canyoning/Tubing	Durian		
Trail Runner			
Glamping			
Cross Country			
Camper Van at Puncak Sempur			

**Market Analysis**

Of the 18 regencies and 9 cities in West Java Province, tourist visits to tourist attractions in Karawang Regency rank fifth with the number of visits of 92 foreign tourists and 1,426,983 domestic tourists.

**Table 55.** The Highest Number of Tourist Visits to Tourist Attractions in West Java Province, 2020

No	District/City	Foreign Tourists	Domestic Tourists	Total
1	West Bandung Regency	23.431	3.440.529	3.463.960

2	Pangandaran Regency	514	2.929.992	2.930.506
3	Bandung	0	2.431.290	2.431.290
4	Garut Regency	94	1.907.007	1.907.101
5	<b>Karawang Regency</b>	<b>92</b>	<b>1.426.983</b>	<b>1.427.075</b>

Source: Preparation of Study of Spatial Utilization Control Instruments in Tourism Areas, Karawang Regency

**Table 66.** Top Attractions in Karawang Regency

ODTW	Location	TW characters
New Ocean Beach	Sungai Buntu Village, Pedes District	Marine Tourism
Temple of Soul Site	Segaran Village, Batujaya District and Telagajaya Village, Pakisjaya District	Antiquities Tourism
Tomb of Syeck Quro	Located in Pulobata Village, Pulo Village, Lemahabang District	Religious Tourism
Rawagede Monument	Rawagede Hamlet, Balongsari Village, Rawamerta District	Historical Tourism
Cigentis Waterfall	Mekarbuana Village, Tegalwaru District	Mountain Tourism
Lake Cipule	Walaha Village, Ciampel District	Artificial Tourism
Tanjung Beach	Pakisjaya District	Marine Tourism
Blandongan Temple	Segaran Village, Batujaya District and Telagajaya Village, Pakisjaya District	Antiquities Tourism
Parisdo Dam (Walaha)	Walaha Village, Klari District	Artificial Tourism
Curug Bandung	Mekarbuana Village, Tegalwaru District	Mountain Tourism

Source: Ripparda Karawang Regency

### Plan to Change the Function of Mount Sanggabuana Area

National Park (TN) is a Nature Conservation Area (KPA) that has an original ecosystem, managed with a zoning system that is used for research, science, education, supporting cultivation, tourism, and recreation. Regulation of the Minister of Environment and Forestry of the Republic of Indonesia Number 46 of 2016, a national park is a nature conservation area that has a native or natural ecosystem with management based on a zoning system. National parks can be used as places of research, science development, supporting cultivation, tourism, education, and recreation.

Efforts to change the forest status of the Sanggabuana Mountains area into a National Park are efforts to preserve and protect the Sanggabuana Mountains area and the biodiversity in it. The biodiversity of the Sanggabuana Mountains is an ecological treasure of the people around the Sanggabuana Mountains, especially the people of Karawang.

According to PP. No. 23 of 2021 concerning Forestry Implementation; Forest Area Function Change is a change in part or all of the function of a Forest in one or several Forest groups into another Forest Area function. According to PP. No.104 of 2015 concerning Procedures for Changing the Designation and Function of Forest Areas; Changes in the Designation of Forest Areas and Changes in the Function of Forest Areas are carried out to meet the demands of national development dynamics and community aspirations while still based on optimizing the distribution of functions and benefits of Forest Areas in a sustainable and sustainable manner, as well as the existence of Forest Areas with sufficient area and proportional distribution.

Article 42 explains: The scope of regulation includes changes in the designation of forest areas and changes in the function of forest areas. Changes in function in the main function of the

Conservation Forest area, namely the nature park area into a nature reserve area, wildlife sanctuary area, national park, botanical forest park, or Buru Park.

Changes in the designation and function of Forest Areas are carried out through partial change mechanisms or changes for provincial areas. Partial changes in the designation of Forest Areas are carried out through Forest Area Exchange or release of Convertible Production Forest areas. Forest Area Exchange is carried out in Limited Production Forest and Fixed Production Forest. Partial changes in Forest Area Allocation are made based on requests that can be submitted by ministers or ministerial-level officials, governors or regents/mayors, leaders of legal entities, or individuals, groups of people, and/or communities.

Some of the requirements for an area worthy of becoming a National Park are that in its ecosystem there are distinctive and unique flora and fauna, the ecosystem in it is still original, has sufficient area to support ecological processes, and is managed through an area zoning system in accordance with its function. Of the four requirements, the Sanggabuana Mountain Area meets to become a National Park. The stages of changing the status of the Sanggabuana Mountain Area to a national park must go through several processes, including biodiversity studies and data, exposure of study results to the Head of the Regency/City (Karawang, Purwakarta, Cianjur, and Bogor) and the Governor of West Java, making a letter of proposal to change the status of the Sanggabuana Mountain Forest Area to the Ministry of Environment and Forestry (KLHK) accompanied by the results of studies and data collection and Equipped with letters of support from 4 regional heads and recommendations by the governor, MoEF created an integrated team to conduct a feasibility study on changing the status of the Sanggabuana Mountain Forest Area to a national park, socialization and hearings with communities around the Sanggabuana Mountains, symposia, seminars, and discussions involving an integrated team of study makers and the community, and the determination of the Sanggabuana Mountain area to become a KPA in the form of a national park through a decree (SK) of the Ministry of Environment and Forestry approved by the DPR.

### **Zone Division of Mount Sanggabuana Area**

Sanggabuana Mountains is a Limited Production Forest (HPT) that stores biodiversity or biodiversity that is quite complete. In the exploration carried out by the Sanggabuana Conservation Foundation (SCF) Team from July 2020 to 2022, there were 5 primates found in the Sanggabuana Mountains. Three types of primates are endemic to Java, namely Javan Gibbon (*Hylobates moloch*), Javan Lutung (*Trachypithecus auratus*), Javan slow loris (*Nycticebus javanicus*), Surili (*Presbytis comata*) is endemic to West Java, and Long-tailed Monkey (*Macaca fascicularis*, found in the Sanggabuana Mountains).

In addition to primates, 151 species of birds from 52 families in Sanggabuana were also found. Some are rare, endemic, and endangered and have Endangered conservation status on the IUCN Red List, and Appendix 1 of CITES. Even the Javan Eagle (*Nisaetus bartelsi*) which is the symbol of Indonesia, Garuda Pancasila still dominates the sky of the Sanggabuana Mountains. In addition to birds from the Falconidae family and songbirds which are native animals, Sanggabuana is also a migratory bird trajectory of Asian Honey Sikep, Chinese Alap Alap and Nippon Eagle Alap.

In the Sanggabuana Mountains also found 21 types of Ficus plants, 10 types of Bamboo plants, and also other rare plants that are part of the rich biodiversity of the Sanggabuana Mountains. To date, only 231 plants from 43 families have been identified. Turubuk plant is a plant that only exists in Sanggabuana, this plant is one of the food crops, people usually consume it as a vegetable. In addition, there are Cinde Cotton plants (*Asclepias Curassavica*) and Balloon Flower plants (*Asclepias Physocarpia*) that grow in the Sanggabuana mountains.

Since August 2021, SCF began installing camera traps in the Sanggabuana Mountain forest and

managed to record several Sanggabuana wildlife such as wild boars, civets, deer, several species of birds, and also Sanggabuana's top predator, the Javan Leopard (*Panthera pardus melas*) which apparently still roams a lot in the forests of the Sanggabuana Mountains and the Javan Dragon Snake. With the wealth of biodiversity in Sanggabuana, as well as other potentials as a carrying capacity for human life around it, and the status of the Sanggabuana Mountain forest which is a limited production forest (HPT), efforts need to be made to preserve and protect. The ideal is to be managed as a forest or conservation area with National Park status.

Based on geographical and socio-economic conditions, also looking at the existing history, the Sanggabuana Mountains after becoming a National Park will have at least 7 complete zones, namely: Core Zone, Jungle Zone, Utilization Zone, Traditional Zone, Rehabilitation Zone, Religious, Cultural, and Historical Zone, and Special Zone. This zoning recommendation is a reference as the development of conservation areas in general which can be a reference for the development of supporting infrastructure, such as accessibility, public facilities and social facilities, as well as other supporting facilities that support conservation and tourism activities so that they can be a benchmark for decision making in future work programs. This zone division will refer to the Regulation of the Minister of Forestry Number 56 of 2006 concerning National Park Zoning Guidelines article 5, here is the division of the zone.

### **Core Zone**

The core zone is a part of a national park that has good natural or physical conditions that are still pristine and not or have not been disturbed by humans who are absolutely protected, the area must not be disturbed by human activities to function for the protection of the representation of native and distinctive biodiversity. This core zone has a function to protect ecosystems, preserve typical flora and fauna and their habitats that are sensitive to disturbance and change, sources of germplasm from plant and wildlife species, for the benefit of research and development of science, as well as for education and cultural support. Activities carried out within the core zone include protection and safeguards; inventory and monitoring of biological natural resources with their ecosystems; research and development, science, education, and/or cultivation support; Facilities and infrastructure can be built not permamen and limited to research and management activities. Examples of Core Zones in Sanggabuana Mountains; There are habitats of 4 endemic primate species, also a habitat of Javan eagles and habitats and paths of large carnivores, namely Javan leopards and is a place of activity for migrant animals, namely in Wallari which is a trajectory of migratory birds from China and Japan.

### **Jungle Zone**

The allocation of the jungle zone is for preservation activities and utilization of natural resources and the natural environment for the purposes of research, education, conservation (Conservation Zone in which there are forest areas and local protection), limited tourism, habitat for migrant animals and supporting cultivation and supporting the core zone. In the jungle zone can carry out various activities including protection and security; inventory and monitoring of natural, biological resources with their ecosystems; development of research, education, limited natural tourism, utilization of environmental services and supporting activities for cultivation; habitat and population development in order to increase the presence of wildlife populations; The development of facilities and infrastructure as long as it is for the benefit of research, education, and natural tourism is limited.

### **Utilization Zone**

Utilization zone is the part of a national park whose location, condition and natural potential, which is mainly used for the benefit of natural tourism and other environmental conditions / services.

Not only that, the utilization zone can also be used for research, education, and cultural purposes. In the utilization zone, activities related to nature conservation can be carried out, including protection and security; inventory and monitoring of biological natural resources with their ecosystems; research and development education, and cultivation support; development of potential and attraction of natural tourism; habitat and population development; exploitation of natural tourism and utilization of environmental conditions/services; development of management facilities and infrastructure, research, education, natural tourism and utilization of environmental conditions/services. Examples of utilization zones in the Sanggabuana Mountains are Cigentis Waterfall, Cipanunda Waterfall, Puncak Sempur Natural Tourism Object, Cikoleangkak Bird Watching Trail, Cipanunda Waterfall, Bandung Waterfall, Cimata Indung Waterfall, Sanggabuana Hiking Trail, and several other natural attractions managed by the community.

### ***Traditional Zone***

Traditional zones are part of national parks designated for the benefit of traditional use by communities that historically have dependency on natural resources. The traditional zone consists of residential areas, agricultural areas consisting of rice fields, fields, gardens, horticulture, animal husbandry and inland fisheries. In traditional zones, various activities related to nature conservation efforts can be carried out, including protection and security; inventory and monitoring of potential types utilized by the community; habitat and population development; research and development; utilization of potential and condition of natural resources in accordance with applicable agreements and regulations.

### ***Rehabilitation Zone***

The rehabilitation zone is part of the park that has been damaged, so it is necessary to carry out restoration activities for biological communities and ecosystems that have been damaged. The community and park managers can carry out activities related to nature conservation efforts, including cultivating animals and plants as an effort to maintain the survival of their lives and species; protect and secure the rights that can still be saved from extinction; carry out restoration of damaged parts of the garden.

### ***Religious, Cultural, and Historical Zones***

Religious, cultural and historical zones are part of national parks in which there are religious sites, cultural and/or historical heritage relics that are used for religious activities, protection of cultural or historical values. The community and park managers can carry out various activities that support the sustainability of the national park including protection and security; utilization of natural tourism, research, education and religion; holding traditional ceremonies; maintenance of cultural and historical sites, as well as the continuity of existing religious/traditional ritual ceremonies.

This religious, cultural, and historical zone serves to show and protect the values of works, cultural, historical, archaeological and religious, as a vehicle for research, education and historical natural tourism, as well as archaeology and religion. Some of the attractions included in this zone include the peak of Sanggabuana makom, the Kebon Jambe site, and several petilasan around the Sanggabuana Mountains. This religious, historical, and cultural tourism object remains in the Sanggabuana Mountain area, and will be in the religious, cultural, and historical zones.

### ***Special Zone***

Special zones are part of parks that due to unavoidable conditions there have been groups of people and their life support facilities who lived before the area was designated as a national park

including telecommunication facilities, transportation facilities and electricity. In special zones, communities and managers can carry out various activities to support the preservation of national parks including protection and security; utilization to support community life and; Rehabilitation; monitoring of population and community activities as well as the carrying capacity of the region. An example that will be included in a special zone in the Sanggabuana Mountain region is the war training area managed by the Kostrad Training Area Maintenance Datasemen (Denharrahlat).

The division of the zone of Mount Sanggabuana Area is based on land use that has been formed through natural processes throughout the lives of the people around Mount Sanggabuana for generations. For more details can be seen in the table and figure below:

**Table 77.** Area in Accordance with the Zone Division in the Mount Sanggabuana Area

District	Village	Zone	Space (Ha)
Pangkalan	Medalsari	Core Zone	3,97
		Jungle Zone	74,43
		Traditional Zone	274,58
Tegalwaru	Cigunungsari	Core Zone	14,94
		Jungle Zone	130,87
		Traditional Zone	510,94
	Cintalaksana	Core Zone	55,12
		Special Zone (Denhar)	43,79
		Utilization Zone	29,99
		Rehabilitation Zone	1,90
		Jungle Zone	186,95
	Cintalalanggeng	Traditional Zone	468,04
Rehabilitation Zone		39,80	
Cintawargi	Traditional Zone	34,20	
	Utilization Zone	13,30	
	Rehabilitation Zone	0,61	
Cipurwasari	Traditional Zone	397,32	
	Utilization Zone	12,49	
	Rehabilitation Zone	62,87	
	Jungle Zone	64,50	
	Traditional Zone	80,69	
Kutalanggeng	Rehabilitation Zone	12,02	
	Traditional Zone	31,98	
Kutamaneuh	Core Zone	82,23	
	Rehabilitation Zone	43,68	
	Jungle Zone	166,83	
	Traditional Zone	216,68	
Mekarbuana	Core Zone	122,15	
	Special Zone (Denhar)	457,30	
	Utilization Zone	28,97	
	Rehabilitation Zone	5,01	
	Religious, Cultural, and Historical Zones	38,93	

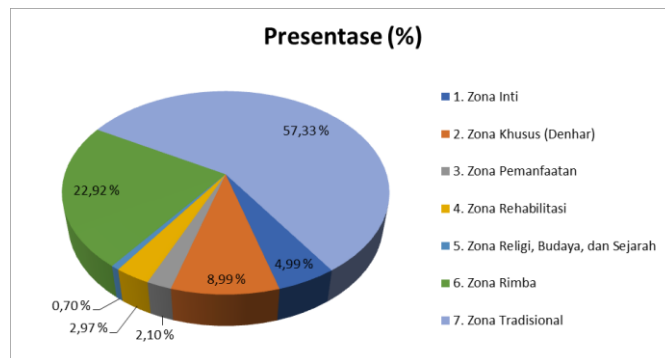
	Jungle Zone	543,16
	Traditional Zone	625,29
	Utilization Zone	32,30
Wargasetra	Jungle Zone	111,34
	Traditional Zone	557,05
<b>Total Area</b>		<b>5.576,21</b>

Source: Analysis Results, 2022

**Table 88.** Percentage of Zone Division in Mount Sanggabuana Area

Zone	Space (Ha)	Present (%)
Core Zone	278,39	4,99
Special Zone (Denhar)	501,09	8,99
Utilization Zone	117,06	2,10
Rehabilitation Zone	165,89	2,97
Religious, Cultural, and Historical Zones	38,93	0,70
Jungle Zone	1.278,08	22,92
Traditional Zone	3.196,77	57,33
<b>Total</b>	<b>5.576,21</b>	<b>100,00</b>

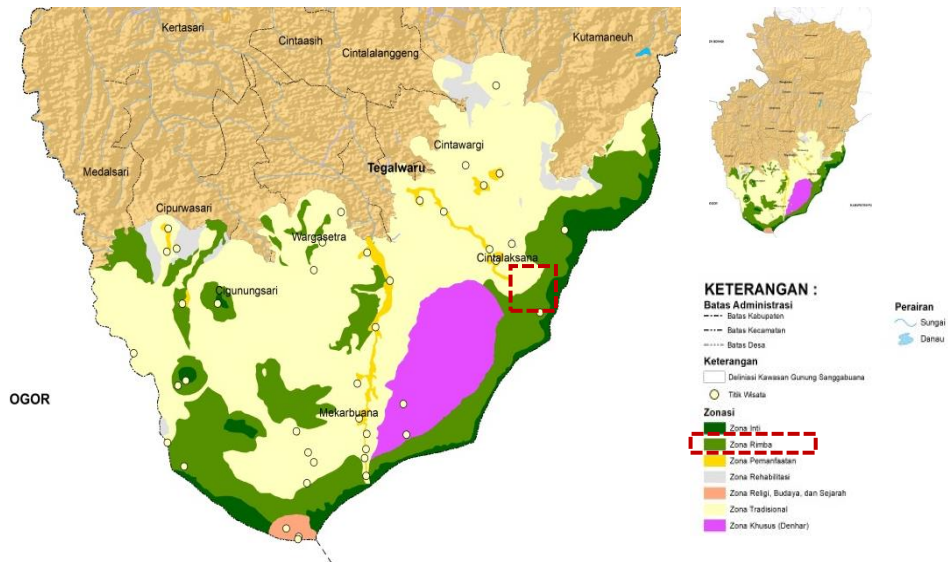
Source: Analysis Results, 2022



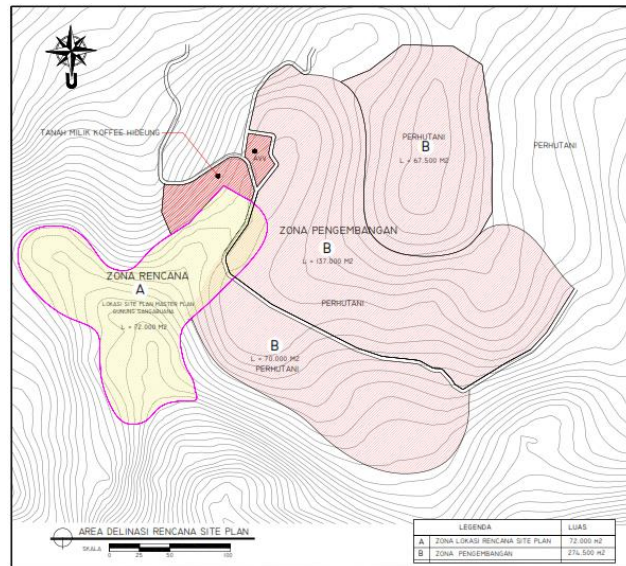
**Figure 11.** Percentage of Zone Division in Mount Sanggabuana Area

**Concept of Tourism Area Development**

The concept of Master Plan Development of Mount Sanggabuana Area applies the concepts of Conservation, Educational Tourism (Arboretum), Cultural Tourism and Ecological Tourism. The development area has an area of 274,500 m<sup>2</sup> or 27.45 Ha which is dominated by forests and plantations, while the location of the siteplan plan has an area of 72,000 m<sup>2</sup> or 7.2 Ha in Cinta Laksana Village, Tegalwaru District, which is a utilization area as a potential conservation area in the Jungle Zone.



**Figure 22.** The Location of the Sanggabuaba Mountain Area Masterplan Plan is in the Jungle Zone (Conservation Zone)



**Figure 33.** Location of Mount Sanggabuaba Masterplan Area Plan



**Figure 44.** Existing Conditions of Mount Sanggabuaba Master Plan Area

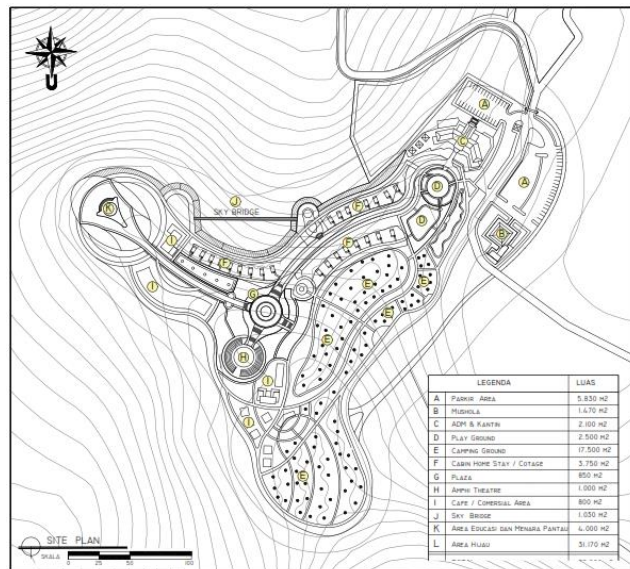


Figure 55. Site Plan Master Plan of Mount Sangabuana Area

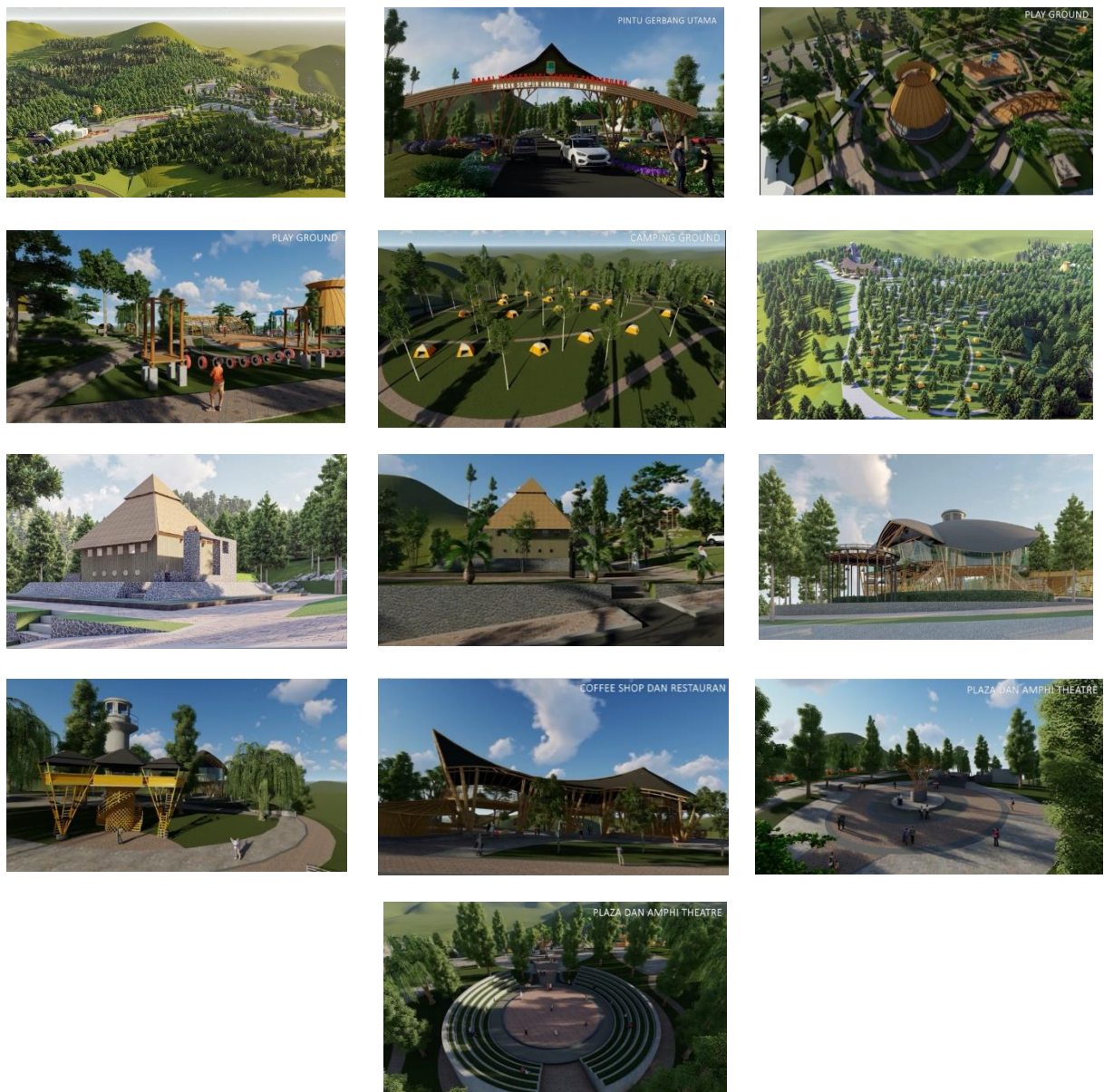


Figure 66. Sangabuana Mountain Site Plan

## CONCLUSION

The Sanggabuana Mountain Area Masterplan is a conservation area development activity in which there is a tourism function based on the development of science and research, as well as supporting education and cultural preservation. In its development, tourism is built based on the process of extracting the potential that exists in the village whether it comes from natural, social, cultural, community or other elements, so that the natural nature and preservation of village characteristics are maintained and maintained. The plan to change the function of the Sanggabuana Mountain Area from a production forest to a National Park as an effort to preserve nature and make it a conservation area.

Referring to the Regulation of the Minister of Forestry Number 56 of 2006 concerning National Park Zoning Guidelines, the Mount Sanggabuana Area has a complete zone, looking at its geographical and socio-economic conditions, also looking at the existing history, the division of the zone of the Mount Sanggabuana Area can be based on land use that has been formed through natural processes throughout the lives of the people around Mount Sanggabuana for generations. The change in the function of the Mount Sanggabuana Area into a National Park follows all procedures and administration that must be carried out from the beginning until now it is in the process of the next stage.

Community-based development of Mount Sanggabuana Area is an approach that offers more role to the community to be involved in the overall process of conservation development. Community-based tourism development also recognizes the existence of the community as an integral part of the village, so that the process implemented is fully aimed at empowering the community and providing maximum benefits to the community. The community as a subject and object of village development must always be involved in the entire process of developing conservation areas, considering that the purpose of developing Mount Sanggabuana in addition to developing characteristics, traditional and cultural values into a tourist attraction, is also to improve community welfare, so that the community must play a role and become a beneficiary party. Socialization of tourism development programs and skills training of small and medium enterprises as a business driving the people's economy in tourism.

## REFERENCES

- Lak, A., Gheitasi, M., & Timothy, D. J. (2020). Urban regeneration through heritage tourism: cultural policies and strategic management. *Journal of Tourism and Cultural Change*, 18(4). <https://doi.org/10.1080/14766825.2019.1668002>
- Mondal, M., & Haque, S. (2017). SWOT Analysis and Strategies to Develop Sustainable tourism in Bangladesh. *UTMS Journal of Economics*, 8(2).
- Peraturan Daerah Kabupaten Karawang No. 2 Tahun 2013 Tentang Rencana Tata Ruang Wilayah Kabupaten Karawang Tahun 2011-2031.
- Peraturan Daerah Kabupaten Karawang No. 3 Tahun 2016 Tentang Rencana Induk Pembangunan Kepariwisata Daerah.
- Peraturan Menteri Kehutanan No. 56 Tahun 2006 Tentang Pedoman Zonasi Taman Nasional.
- Peraturan Menteri Lingkungan Hidup dan Kehutanan No. 46 Tahun 2016 Tentang Pemanfaatan Jasa Lingkungan Panas Bumi Pada Kawasan Taman Nasional, Taman Hutan Raya dan Taman Wisata Alam.
- Peraturan Pemerintah No. 21 Tahun 2021 Tentang Penyelenggaraan Penataan Ruang;
- Peraturan Pemerintah No. 23 Tahun 2021 Tentang Penyelenggaraan Kehutanan.
- Peraturan Pemerintah No. 104 Tahun 2015 Tentang Tata Cara Perubahan Peruntukan Dan Fungsi Kawasan Hutan.

- Revayanti, I. (2022). Masterplan Desa Wisata Lamajang Lamajang Tourism Village Master Plan. *Jurnal Pendidikan dan Konseling (JPDK)*, 4(5), 7824-7835.
- Singh, N. (2010). Swot Analysis – A Useful Tool For Community Vision A concept paper of central Himalayan village. *Journal of Strategic Marketing*, 2(9).
- Undang-undang Republik Indonesia No. 26 Tahun 2007 Tentang Penataan Ruang.
- Undang-undang Republik Indonesia No. 32 Tahun 2009 Tentang Perlindungan dan Pengelolaan Lingkungan Hidup.
- Wiwoho, H., Hakim, A., Riniwati, H., & Leksono, A. S. (2019). Analysis of Community-Based Educational Ecotourism Development Policy in Taman Beach Area, Pacitan Regency. *IOP Conference Series: Earth and Environmental Science*, 239(1). <https://doi.org/10.1088/1755-1315/239/1/012047>
- Zhu, Y., Chen, C., Zhang, G., Lin, Z., Meshram, S. G., & Alvandi, E. (2023). Investigation of West Lake Ecotourism Capabilities Using SWOT and TOPSIS Decision-Making Methods. *Sustainability (Switzerland)*, 15(3). <https://doi.org/10.3390/su15032464>



© 2023 by the authors. Submitted for possible open access publication under the terms and conditions of the Creative Commons Attribution (CC BY SA) license (<https://creativecommons.org/licenses/by-sa/4.0/>).